



2026 Nacra 15 World Championship 25TH JULY – 1ST AUGUST Notice of Race (NoR)

The Organising Authority is Hooe Point Sailing Club (HPSC) & Plym Yacht Club (PYC) in conjunction with the UK Nacra 15 Class Association and the International Nacra 15 Class Association (IN15CA).



DEFINITIONS:

PC: Protest Committee or International Jury

NoR: Notice of Race

OA: Organising Authority

RRS: Racing Rules of Sailing

SI: Sailing Instructions

RC: Race Committee

WS: World Sailing

ONB: Official Notice Board

In this document the notation in a rule:

[NP] means that a boat may not protest another boat for breaking that rule.
This changes RRS 60.1.

[DP] means that a penalty for breach of that rule may, at the discretion of the Jury, be less than disqualification.

[SP] denotes a rule for which a standard penalty may be applied by the race committee without a hearing. This changes RRS 63.1.

1. RULES

- 1.1. The regatta is governed by the rules as defined in *The Racing Rules of Sailing* (RRS).
- 1.2. The Nacra 15 Equipment Regulations (ER) will apply and will be published on the ONB.
- 1.3. Racing rules will apply: RRS Appendix T, "Arbitration"
- 1.4. RRS 44.1 is changed so that the Two-Turns Penalty is replaced by the One-Turn Penalty.
- 1.5. The prescriptions of the Royal Yachting Association will apply, see Appendix 1.
- 1.6. The Nacra 15 Class Rules will apply. With respect to RRS 78.1, the penalty for any breach of a class rules not listed in the 'Standard Penalties' may, at the discretion of the Jury, be less than disqualification.
- 1.7. If there is a conflict between languages, the English text will take precedence.
- 1.8. Plymouth is a Naval/Commercial Port, shipping movements can be frequent and must have priority. Boats, at all times, must keep clear of ships leaving or entering the port and obey instructions from the RC where avoiding action is necessary. Failure to obey RC instructions may be treated as misconduct.
See <https://www.legislation.gov.uk/ukxi/2020/1261/made> & Appendix 5.

2. SAILING INSTRUCTIONS

- 2.1. The Sailing Instructions will be available on 20th July 2026 on the ONB located at <https://racingrulesofsailing.org/events/13417>

3. COMMUNICATION

- 3.1. The ONB is located at: <https://racingrulesofsailing.org/events/13417>
- 3.2. [DP] From the first warning signal until the end of the last race of the day, except in an emergency or when using equipment provided by the race committee, a boat shall not make voice, radio or data transmissions and shall not receive voice, radio or data communication that is not available to all boats.
- 3.3. Unofficial notices may also be posted in the Competitors WhatsApp group.

4. ELIGIBILITY AND ENTRY

- 4.1. The event is open to all boats of the standard Youth “C” foil Nacra 15 class.
- 4.2. Eligible boats may enter by completing the entry form online on the following link and submitting it together with the required fee (see NoR 5).
<https://nacra15worlds.com/entry>
- 4.3. To be considered an entry in the event, a boat shall complete all registration requirement and pay all fees before:
 - * June 1st 2026 for an Early Entry Fee
 - * July 19th 2026 for a Standard Fee (see NoR 5)
- 4.4. Late entries (including payment entry fee) will be accepted until July 18th 2026.
- 4.5. All competitors shall comply with the World Sailing Eligibility Code (Regulation 19).
- 4.6. All crew shall be full members of the International Nacra 15 Class Association.
- 4.7. The following shall be presented at the registration on site:
 - * Competitors under 18 years of age (at the first day of competition) shall hand over a signed and completed parental (or guardian) consent declaration form see Appendix 2 & this link:
 - * <https://assets.rya.org.uk/assetbank-rya-assets/action/directLinkImage?assetId=50918>
 - * Third-party liability insurance for an amount of at least £3,000,000 GBP
- 4.8. Coaches may enter by completing the entry form online on link, submitting it together with the required fee (see NoR 5)
 - * Coaches shall present during registration:
Third-party liability insurance for an amount of at least £3,000,000 GBP
- 4.9. In accordance with RRS 76.1, the OA will follow World Sailing decisions related to Russia & Belarus.

5. ENTRY FEES

- 5.1. Competitors entry fees are as follows:

- * **Early entry fee paid before JUNE 1st 2026: £500 GBP**
- * **Standard fee paid from JUNE 1st 2026: £700 GBP**

The entry fee includes the class fee to be paid by OA to the IN15CA

The entry fee is due even if a boat withdraws the entry later or does not arrive at the venue.

- 5.2. Competitors entry fees will only be refunded if the entry is rejected or cancelled by the organizing authority or the race committee or if the event is cancelled or the competitor is prevented from attending due to any governmental health regulation or a competitor has an injury (with written evidence by a doctor).

Competitors entry fee includes:

- * Opening Ceremony
- * Pasta party after the last race of each racing day
- * "Nacra Midweek Dinner"
- * Closing Ceremony
- * Gift
- * Free Trailer parking

- 5.3. Required entry fees must be paid online when registering via the link

- 5.4. Entry fees must be paid online. Entries are not completed until the required entry fee is received by the Organizing Authority in its account.

- 5.5. Early entry fees must be received before June 1st 2026 (= the final date of the early entry period); otherwise, the Standard entry-fee must be paid.

- 5.6. Coach fees are as follows:

- * **Early coach fee (paid before JUNE 1st 2026): £100GBP**
- * **Standard coach fee (paid from JUNE 1st 2026): £150 GBP**

Entry fees must be paid online. Coach fees will only be refunded if the entry is rejected or cancelled by the organizing authority or the race committee or if the event is cancelled or the coach is prevented from attending due to any governmental health regulation or a coach (or his/her sailor) has an injury (with written evidence by a doctor).

- 5.7. The Coach fee includes:

- * Opening Ceremony
- * Pasta party after the last race of each racing day
- * "Nacra Midweek Dinner"
- * Closing Ceremony
- * Free trailer parking
- * Free coach boat berth in the harbour

- 5.8. Required coach fees must be paid online when registering via the link:

<https://nacra15worlds.com/entry>

6. CREW LIMITATION

6.1. The following crew limitations apply:

- * There will be no minimum or maximum age limit.
- * A competing team shall be able to right the boat from capsized unassisted and may be asked to demonstrate this afloat prior to racing.

7. ADVERTISING

- 7.1. [DP] Boats shall display event advertising chosen and supplied by the OA conforming to World Sailing Advertising Code 20.4.
- 7.2. The organizing authority may provide bibs that competitors are required to wear as permitted by the World Sailing Advertising Code.

8. QUALIFYING SERIES AND FINAL SERIES

- 8.1. The event may consist of a qualifying series and a final series if more than 60 boats are entered.
- 8.2. Split fleets will be in groups of approximately equal numbers of boats (± 1 boat).

9. SCHEDULE

9.1. The schedule, including registration, equipment inspection and racing, is as follows:

Saturday July 25th	14.00 -18.00	Registration & measurement
Sunday July 26th	09.00–13.00 & 14.00-18.00	Registration & measurement
Monday July 27th	09.00 – 11.30	Registration & measurement
	12.00	Briefing – Sailors & Coaches
	12.30	Briefing- Coaches & Safety boats
	14.30	Practice Race
	18.30	Opening Ceremony
Tuesday July 28th	09.00	Briefing- Sailors & Coaches
	09.30	Briefing Coaches & Safety boats
	10.55	1 st Warning signal
Wednesday July 29th	09.00	Briefing- Sailors & Coaches
	09.30	Briefing- Coaches & Safety boats
	10.55	1 st Warning signal
Thursday July 30th	09.00	Briefing- Sailors & Coaches
	09.30	Briefing- Coaches & Safety boats
	10.55	1 st Warning signal
	TBC	Midweek dinner
Friday July 31st	09.00	Briefing- Sailors & Coaches
	09.30	Briefing- Coaches & Safety boats
	10.55	1 st Warning signal
Saturday August 1st	09.00	Briefing- Sailors & Coaches
	09.30	Briefing- Coaches & Safety boats
	10.55	1 st Warning signal
	circa 17.00 <i>(as soon as possible)</i>	Prize giving & closing ceremony

9.2. On Monday 27th July a MANDATORY briefing (for all competitors and coaches is scheduled at 12.00.

9.3. Total number of scheduled races: 19

- * 4 Races per day scheduled on 28th July – 1st August
- * 3 Races scheduled on 1st August

9.4. On the last scheduled day of racing no warning signal will be made after 15.00

9.5. Competitors intending to arrive with boats before July 25th 2026 shall contact: enquiries@mount-batten-centre.com or telephone +44-1752-404567.

9.6. A fee of £10 GBP per day will be payable direct to the centre.

10. EQUIPMENT INSPECTION

- 10.1. Boats shall comply with all Nacra 15 Class Rules.
- 10.2. Each boat shall be inspected according to the equipment online inspection time slots, link: <http://www.slottr.com/sheets/18291794>
- 10.3. All teams shall complete the online Equipment Inspection Form prior to inspection, link: <https://forms.gle/m6N7xatWszdTG3FA8>
- 10.4. The procedures for Inspection are specified in the Equipment Regulations (ER) on: <https://racingrulesofsailing.org/events/13417>

11. CLOTHING & EQUIPMENT

- 11.1. Competitors are reminded of the new 2026 Nacra 15 Class rules —
C.3.1(a)(ii) : high visibility helmets and C.11.3(b)(iv) : white letters on black sails

12. VENUE

- 12.1. The 2026 Nacra 15 World Championship will be held in Plymouth, UK at Mount Batten Sailing Centre, the host clubs are:
 - * Hooe Point Sailing Club
<https://www.hooepointsailingclub.co.uk/home>
 - * Plym Yacht Club
<https://plymyachtclub.org.uk>
- 12.2. For the location of dinghy parks and MBSC see Appendix 3
- 12.3. For the location of the sailing area see Appendix 4

13. COURSE

- 13.1. The courses to be sailed will be windward / leeward WS LA2 or LA3, including offset mark and leeward gate.
- 13.2. The target time will be 30 minutes.

14. PENALTY SYSTEM

- 14.1. An International Jury will be appointed in accordance with RRS 91(b) and RRS Appendix N. The right of appeal will be denied in accordance with RRS 70.3.

15. SCORING

15.1. 4 races are required to be completed to constitute the championship.

15.2. A boat's series score will be the total of her race scores excluding her worst score(s) as follows:

RACES	DISCARDS	COMMENTS
1-4	0	No discard
5-10	1	One worst score excluded. If only one Final series race is completed it will not be excluded.
11-19	2	Two worst scores excluded. If two or more Final series races are completed, then a maximum of one Final series race may be excluded.

15.3. RRS A5.2 is changed so that those scores are based on:

- a) In a Single fleet series, the number of boats assigned to compete, or
- b) In the Qualifying series, the number of boats assigned to the largest fleet, or
- c) In the Final series, the number of boats assigned to the fleet.

15.4. When a Qualifying/Final series is sailed:

- a) The Qualifying series races and the Final series races will count for total points in the event.
- b) If no race in the Final series is completed, the overall ranking in the Qualifying series will be established and this shall count as the official result.
- c) Boats assigned to Gold fleet will be ranked higher in the event than competitors assigned to Silver fleet.

15.5. Nacra 15 U19 and U17 results will be extracted from overall results without recalculation.

15.6. RRS 90.3 (e) applies.

16. [DP] SUPPORT VESSELS

16.1. Support team vessels shall be registered with the OA.

16.2. Support team vessels will be required to comply with the Support Vessel Regulations, see Appendix 6.

16.3. [DP] Support team vessels shall be marked with their National letter.

17. CHARTERED OR LOANED BOATS

17.1. A chartered or loaned boat may carry national letters or a sail number in contravention of her class rules, provided that the race committee has approved her sail identification before the first race. See RRS G3.

17.2. To rent a charter boat please contact

<https://nacrasailing.com/charters>

18. BERTHING/ PARKING

[DP] [NP] Boats, trailers, and cars shall be kept in their assigned places.

19. HAUL – OUT RESTRICTIONS

N/A

20. DIVING EQUIPMENT AND PLASTIC POOLS

N/A

21. DATA PROTECTION

21.1. By participating in this event, competitors grant to the OA and its sponsors the right in perpetuity to make, use and show, from time to time at their discretion, any motion pictures and live, taped or filmed television and other reproductions of the athlete and the boat, produced during the period of the competition without compensation.

21.2. [DP] [NP] If required by the OA competitors shall give interviews at the regatta.

21.3. [DP] [NP] Boats may be required to carry cameras, sound equipment and positioning equipment as specified and supplied by the OA.

21.4. [DP] [NP] Competitors shall not interfere with the normal working of the OA supplied media equipment.

22. RISK STATEMENT

22.1. RRS 3 states: 'The responsibility for a boat's decision to participate in a race or to continue racing is hers alone.' Sailing is by its nature an unpredictable sport and therefore inherently involves an element of risk. By taking part in the event, each competitor agrees and acknowledges that:

- a) They are aware of the inherent element of risk involved in the sport and accept responsibility for the exposure of themselves, their crew and their boat to such inherent risk whilst taking part in the event;
- b) They are responsible for the safety of themselves, their crew, their boat and their other property whether afloat or ashore;
- c) They accept responsibility for any injury, damage or loss to the extent caused by their own actions or omissions;
- d) Their boat is in good order, equipped to sail in the event and they are fit to participate;
- e) The provision of a race management team, patrol boats and other officials and volunteers by the event organizer does not relieve them of their own responsibilities;
- f) The provision of patrol boat cover is limited to such assistance, particularly in extreme weather conditions, as can be practically provided in the circumstances;
- g) It is their responsibility to familiarise themselves with any risks specific to this venue or this event drawn to their attention in any rules and information produced for the venue or event and to attend any safety briefing held for the event.

23. [NP] INSURANCE

- 23.1. Each participating boat shall be insured with valid third-party liability insurance including the coverage of risks at regattas, with a minimum cover of £3million GBP per incident or the equivalent.
- 23.2. Each support vessel shall have a valid insurance certificate including third party liability coverage of at least £3 million GBP per incident.
- 23.3. The OA is not responsible for verifying the status or validity of certificates.

24. PRIZES

24.1. Nacra 15 Titles and ranking prizes:

- a) The overall winner will be awarded the title **“Nacra 15 World Champion”**. Prizes for the top 3 teams of the championship (overall), including for both helm and crew.
- b) The U19 winner will be awarded the title **“Nacra 15 Class - U19 World Champion”** (both competitors under 19 years old, during the last racing day). Prizes for the top 3 teams U19, including for both helm and crew.
- c) The U17 winner will be awarded the title **“Nacra 15 Class - U17 World Champion”** (both competitors under 17 years old, during the last racing day). Prizes for the top 3 team U17, including for both helm and crew.
- d) Nations Cup:
The top 3 national teams (combined results of the best 3 boats of each nation).
- e) The Organizing Authority may award additional prizes.

25. FURTHER INFORMATION

For further information, please contact:

Event Chair: Sam Marshall

Email: hello@nacra15worlds.com

Event Website: <https://nacra15worlds.com>

Or contact: International Nacra 15 Class: manager@nacra15class.com

Appendix 1. RYA PRESCRIPTIONS

The following RYA Sailing Prescriptions will apply to the event:

Rule 4 – Acceptance of the Rules

Add new rule 4.6:

- Each competitor and boat owner shall ensure that their support persons comply with the rules.

Add new rule 4.7:

- The penalty for a breach of rule 4 shall be at the discretion of the protest committee.

6.1 – Anti-doping

- The national authority procedural rules required to implement the World Anti-Doping Code through World Sailing Regulation 21 are the RYA Anti-Doping Rules, as published on the RYA website.

65.1– Legal Liability and Costs

- Any issue of liability or claim for damages arising from an incident while a boat is bound by The Racing Rules of Sailing shall be subject to the jurisdiction of the courts and not considered by a protest committee.
- A boat that takes a penalty or retires does not thereby admit liability for damages or that she has broken a rule.

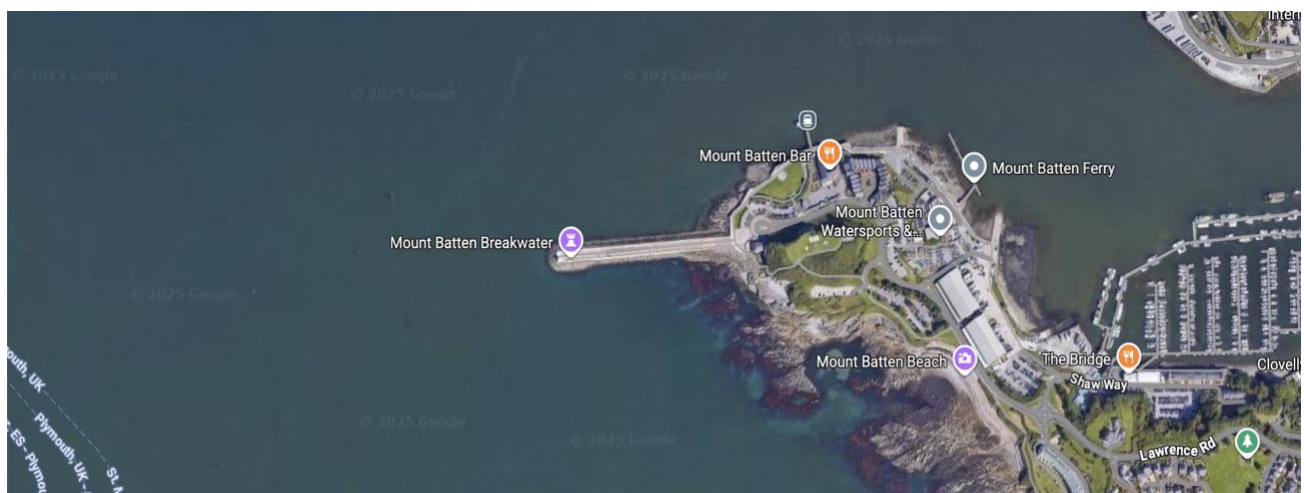
Appendix 2. PARENT OR GUARDIAN AGREEMENT FORM

<https://assets.rya.org.uk/assetbank-rya-assets/action/directLinkImage?assetId=50918>

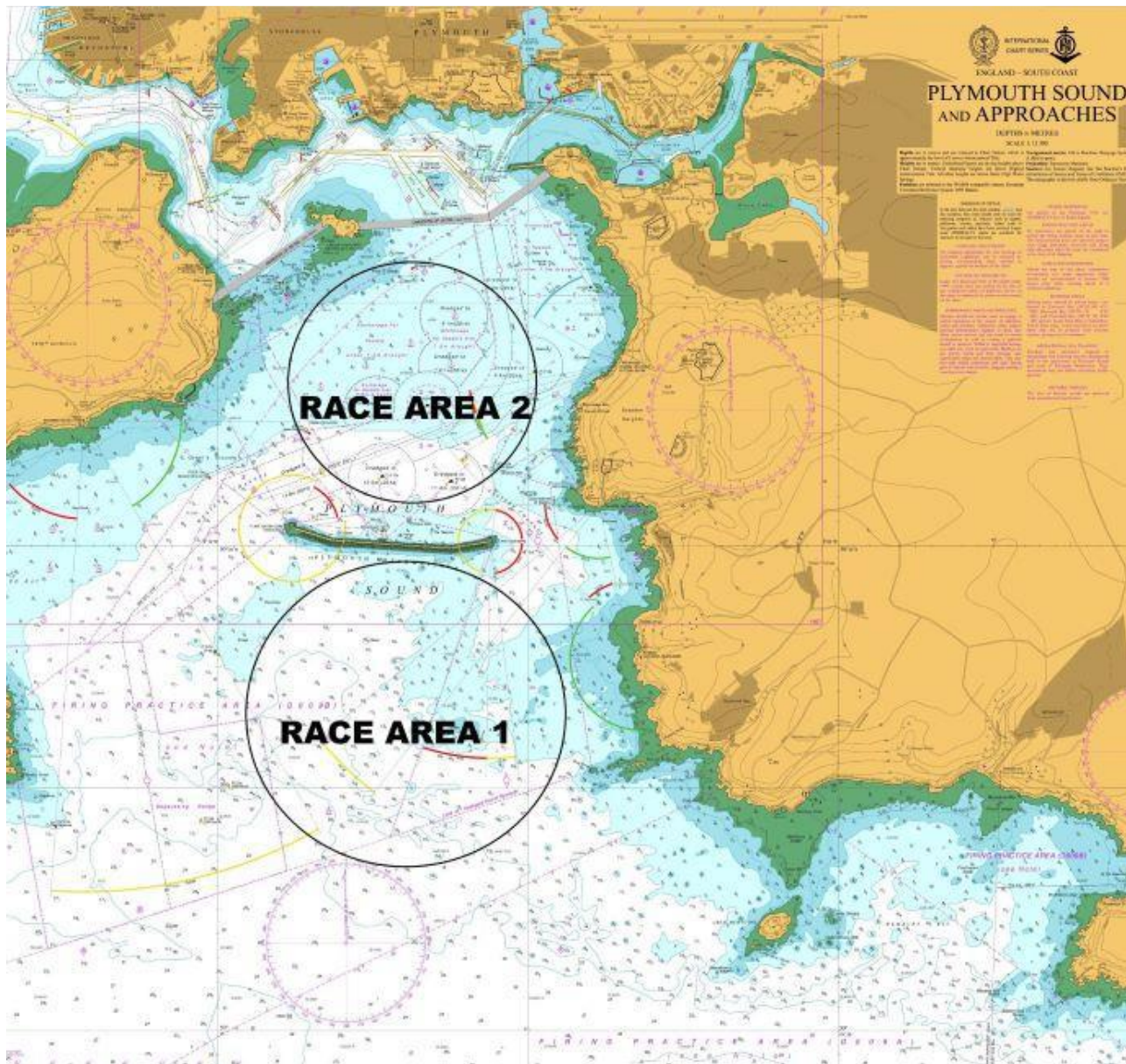
Appendix 3. VENUE LOCATION

<https://maps.app.goo.gl/MmgZoQ93BqdLcdRt9>

Website: <https://www.mount-batten-centre.com>



Appendix 4. COURSE AREA



Appendix 5. SUPPORT BOAT REGULATIONS

Support BOATS must carry the following Equipment on board:

- Life jackets / buoyance aids for the driver and all passengers,
- Engine kill cord (also known as a safety lanyard or automatic engine immobiliser) with a spare kill cord on the support vessel
- VHF radio capable of receiving instruction from Safety or Race Committee
- First-aid kit
- Adequate anchor and tackle for conditions and depth
- Tow rope (minimum 15m long and 10mm thick)
- Knife

Support BOAT Regulations:

- Support boats must be registered with the Organizing Authority and must be marked with their applicable national sail letters clearly displayed, the minimum height for these letters is 200mm.
- Support boats must comply with all local regulations
- Support boats must follow Race Committee instructions on the designated VHF channel
- **KILL CORDS SHALL BE WORN AT ALL TIMES WHEN THE ENGINE IS RUNNING**
- Life jackets / buoyance aids must be worn at all times when afloat (by all persons on board)

Support BOATS may not be positioned, except during rescue operations:

- Closer than 100 metres of any boat racing.
- Within 100 metres to leeward of the starting line and its extensions from the warning signal until all boats have left the starting area or the race committee signals a postponement, general recall or abandonment.
- Within 100 metres of any mark of the course while boats are in the vicinity of that mark.
- Within 100 metres of the finishing line while boats are finishing.
- In addition, support vessels that are motoring above 5 knots shall remain at least 150 metres from any boat racing.

**Support boats will be part of rescue operations,
monitored / controlled by Race Committee**